



ADVANCE VESA® MOUNT ARTICULATING ARMS

Models VSM-AR1/VSM-AR2

SPECIFICATION DATA

DA-LITE SCREEN COMPANY, INC.
3100 North Detroit Street
Post Office Box 137
Warsaw, Indiana 46581-0137
Phone: 574-267-8101
800-622-3737
Fax: 574-267-7804
Toll Free Fax: 877-325-4832
www.da-lite.com
e-mail: info@da-lite.com

SUGGESTED SPECIFICATIONS: Da-Lite/Advance VESA® wall mount model **VSM-AR** ___ shall be mounted where indicated on plans. The mount shall be a fabricated mild steel design and consist of a wall support plate, two articulating arms, swing channel, and tilt plate. The wall support plate shall consist of two 1/4" steel support brackets welded to an 11 gauge steel plate. The articulating arms shall be 1" x 2" x 14-gauge rectangular steel tubing welded to solid steel pivots. The swing channel and tilt plate shall be formed 14 gauge sheet steel. Mount to attach to _____ wall construction with 3/8" diameter fasteners and extend _____ inches from the wall. Mount assemblies shall have a commercial powder coat black or gray finish.

The fasteners used to install the mount shall be selected from the following options:

- 3/8" x 2 1/2" hex head lag screws for wood stud structural walls
- 3/8"-16 Hollow Set Drop-In with hex head cap screws for solid concrete structural walls
- 3/8"-16 Toggle® with hex head cap screws for hollow concrete block and steel stud structural walls

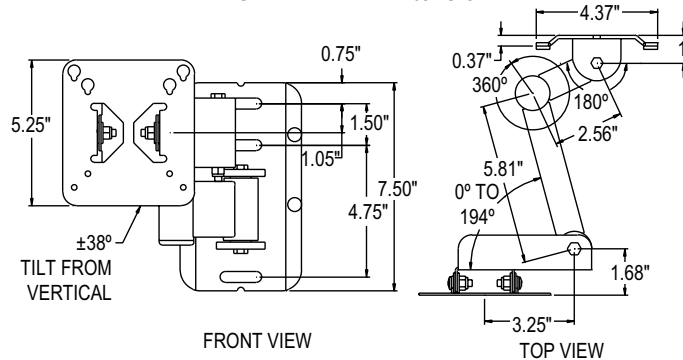
Specification Data

Model	VESA® Hole Pattern	Base Arm Rotation	Monitor Tilt	Reach From Wall to Back of Monitor	Equipment Load Rating
VSM-AR1	75 and 100 mm	180°	±38°	11"	40 lbs.
VSM-AR2	75 and 100 mm	180°	±38°	20"	40 lbs.

Optional Mount Accessories:

- A101 Hardware Kit Solid Concrete
- A105 Hardware Kit Wood Stud
- A109 Hardware Kit Steel Stud, Hollow Concrete Block

VSM-AR1 – 11" Extension



VSM-AR2 – 20" Extension

