

ADVANTAGE® DELUXE ELECTROL®

Concealed with Closure Doors  
Electric Projection Screen

When ordering, make appropriate selections:

1. Select size from charts below.

2. Select viewing surface:

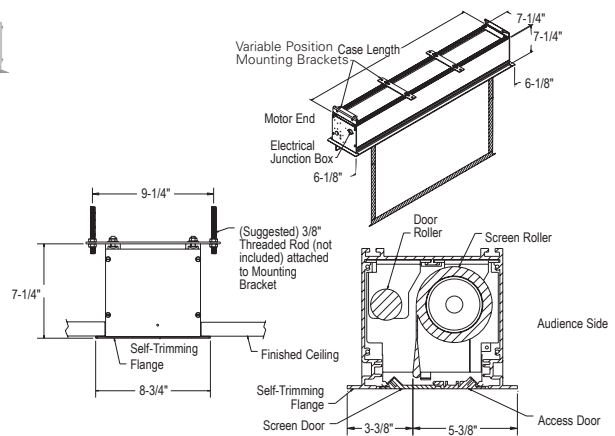
- Matte White
- High Contrast Matte White
- Video Spectra 1.5
- High Power
- GREENGUARD® and GREENGUARD® Children and Schools Certified.

3. Options:

- Extra Drop available to lower picture area more than normal. Specify total drop at top \_\_\_\_\_ (black or white) or at bottom \_\_\_\_\_ (black or white). 13' maximum total surface height including picture area.
- No borders (Black masking borders standard).
- Single motor Low Voltage Control(LVC) - external.
- Single motor Low Voltage Control(LVC) - built-in.
- Wireless Remote Control for LVC.
  - Radio Frequency Remote
  - Radio Frequency Range Extender available
  - Infrared Remote
- Key Locking Cover Plate for 120V Switch or LVC.
- Key Operated Switch for 120V only (NOTE: Cannot be used with LVC).
- 220/240 Volt (50 Hz) Motor.
- Video Projector Interface - external.
- SCB-100 RS-232 Serial Control Board - external.
  - NET-100 Ethernet-Serial Adapter
- SCB-100 RS-232 Serial Control Board - built in. Electrical connections will be on right end of screen case on units with built-in SCB-100.
  - NET-100 Ethernet-Serial Adapter
- SCB-200 RS-232 Serial Control Board - built-in. Electrical connections will be on right end of screen case on units with built-in SCB-200.
  - NET-200 Ethernet-Serial Adapter
  - WC-200 Wall Controller
  - IR-200 Infrared Remote

Detailed dimensional drawings, wiring diagrams and installation instructions available upon request.

Specifications subject to change without notice.



- Designed with the installer in mind. You can choose to receive the case and fabric together or separately to prevent fabric damage during the "rough-in" stages of construction.
- Concealed in the ceiling with closure doors.
- UL Plenum rated case.

SUGGESTED SPECIFICATIONS:

\_\_\_\_\_ projection screen(s), \_\_\_\_\_(H) x \_\_\_\_\_(W).

The Advantage® Deluxe Screen shall have two motors, one to operate door and one to operate screen. Door motor electrically operated 120 volt (60 Hz) not more than 1.2 amp, mounted inside the roller, to be three wire with ground, quick reversal type, oiled for life, with automatic thermal overload cutout, integral gears, capacitor and an electric brake to prevent coasting. To have pre-set but adjustable limit switches to automatically stop fabric door in the "down" position. The door will lift to the closed position where a micro switch shall cut off the electrical current to the door motor. The roller to be of rigid aluminum. Screen motor is electrically operated 120 volt (60 Hz) not more than 2.4 amp, mounted inside the roller, to be three wire with ground quick reversal type, oiled for life, with automatic thermal overload cutout, integral gears, capacitor and an electric brake to prevent coasting. To have pre-set but adjustable limit switches to automatically stop picture surface in the "up" and "down" positions. The roller to be of rigid metal. Screen fabric to be flame retardant and mildew resistant fiberglass with black masking borders standard. Bottom of fabric shall be formed into a pocket holding a metal rod with plastic caps. Case shall be a white powder coated aluminum extrusion. Bottom of case to be self-trimming with a built-in flange around the bottom of the case. A section of the bottom of the case shall be an aluminum door equipped with concealed hinges so that it opens and closes automatically with the lowering and raising of the picture surface. The balance of the bottom of the case shall be a second hinged aluminum door with manual opening to provide access. Junction box shall be internally integrated into the housing making it possible to install the housing and wire to the building's electrical system during construction. The junction box shall contain a quick connect connector that is mounted in the housing for easy plug-in connection to the motorized fabric and roller assembly. The motorized fabric and roller assembly to be installed in the case at the factory or at a later time at the job site. To be complete with three position control switch with cover plate. Suitable for use in environmental air space in accordance with section 300-22 (c) of the National Electric Code, and sections 2-128, 12-010 (3) and 12-100 of the Canadian Electrical Code, part 1, CSA C22.1. Screen to be listed by Underwriters' Laboratories.



Matte White: Horizontal seam required when both dimensions exceed 10'.  
Video Spectra 1.5 and High Contrast Matte White: Available in sizes where both dimensions do not exceed 8'.  
High Power: Available in sizes up to and including 9' x 12'. Horizontal seam required when both dimensions exceed 6'.

4:3 VIDEO FORMAT DIMENSIONS (2" standard black drop at top)

Viewing Area H x W	Nominal Diagonal	Overall Case Length	Approx. Shipping Wt. Lbs.
43" x 57"	72"	72 1/4"	83
50" x 67"	84"	82 1/4"	93
57" x 77"	96"	96 1/4"	108
60" x 80"	100"	96 1/4"	108
69" x 92"	120"	108 1/4"	119
87" x 116"	150"	132 1/4"	144
105" x 140"	180"	156 1/4"	168
120" x 160"	200"	176 1/4"	188

16:9 HDTV FORMAT DIMENSIONS (2" standard black drop at top)

Viewing Area H x W	Nominal Diagonal	Overall Case Length	Approx. Shipping Wt. Lbs.
45" x 80"	92"	96 1/4"	108
52" x 92"	106"	108 1/4"	119
54" x 96"	110"	112 1/4"	120
58" x 104"	119"	120 1/4"	122
65" x 116"	133"	132 1/4"	144
78" x 139"	159"	156 1/4"	188
90" x 160"	184"	176 1/4"	188

16:10 WIDE FORMAT DIMENSIONS (2" standard black drop at top)

Viewing Area H x W	Nominal Diagonal	Overall Case Length	Approx. Shipping Wt. Lbs.
50" x 80"	94"	96 1/4"	108
60" x 96"	113"	112 1/4"	120
69" x 110"	130"	126 1/4"	133
87" x 139"	164"	156 1/4"	188

SQUARE FORMAT DIMENSIONS

(screens with ^ have 2" standard black drop at top)

Sizes H x W	Overall Case Length	Approx. Shipping Wt. Lbs.
50" x 50"	62 1/4"	71
60" x 60"	72 1/4"	81
70" x 70"	82 1/4"	92
84" x 84"	96 1/4"	107
6' x 8'^A	108 1/4"	111
8' x 8'	108 1/4"	117
7' x 9'^A	120 1/4"	122
9' x 9'^A	120 1/4"	130
8' x 10'^A	132 1/4"	142
10' x 10'^A	132 1/4"	170
9' x 12'^A	156 1/4"	180
12' x 12'	156 1/4"	200

Overall case length dimensions ±1/4".

Note: Custom formats and sizes available upon request.

Note: Electrical connections will be on right end of screen case on units with built-in SCB-100 or SCB-200.